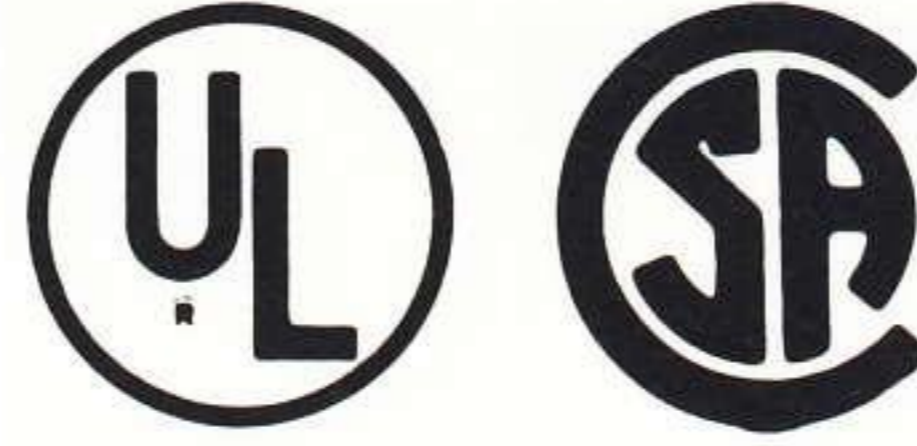
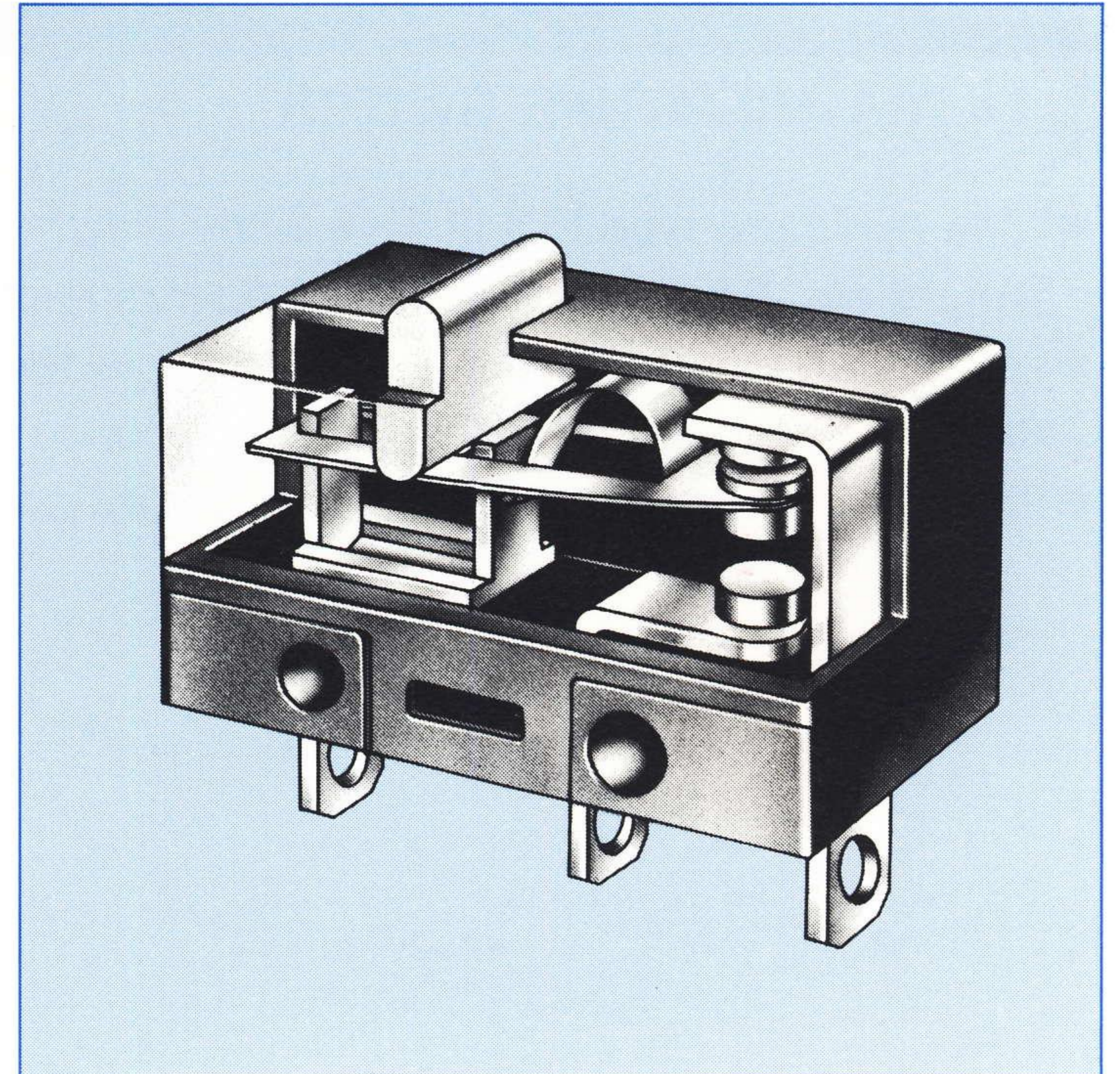
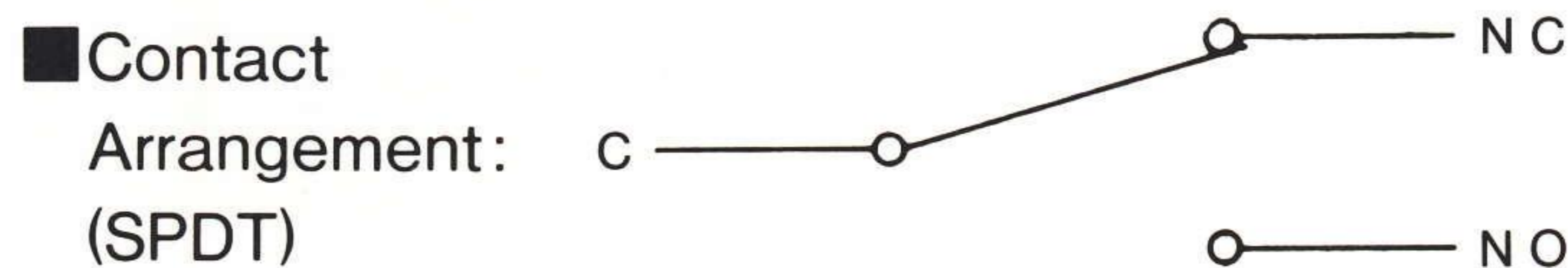
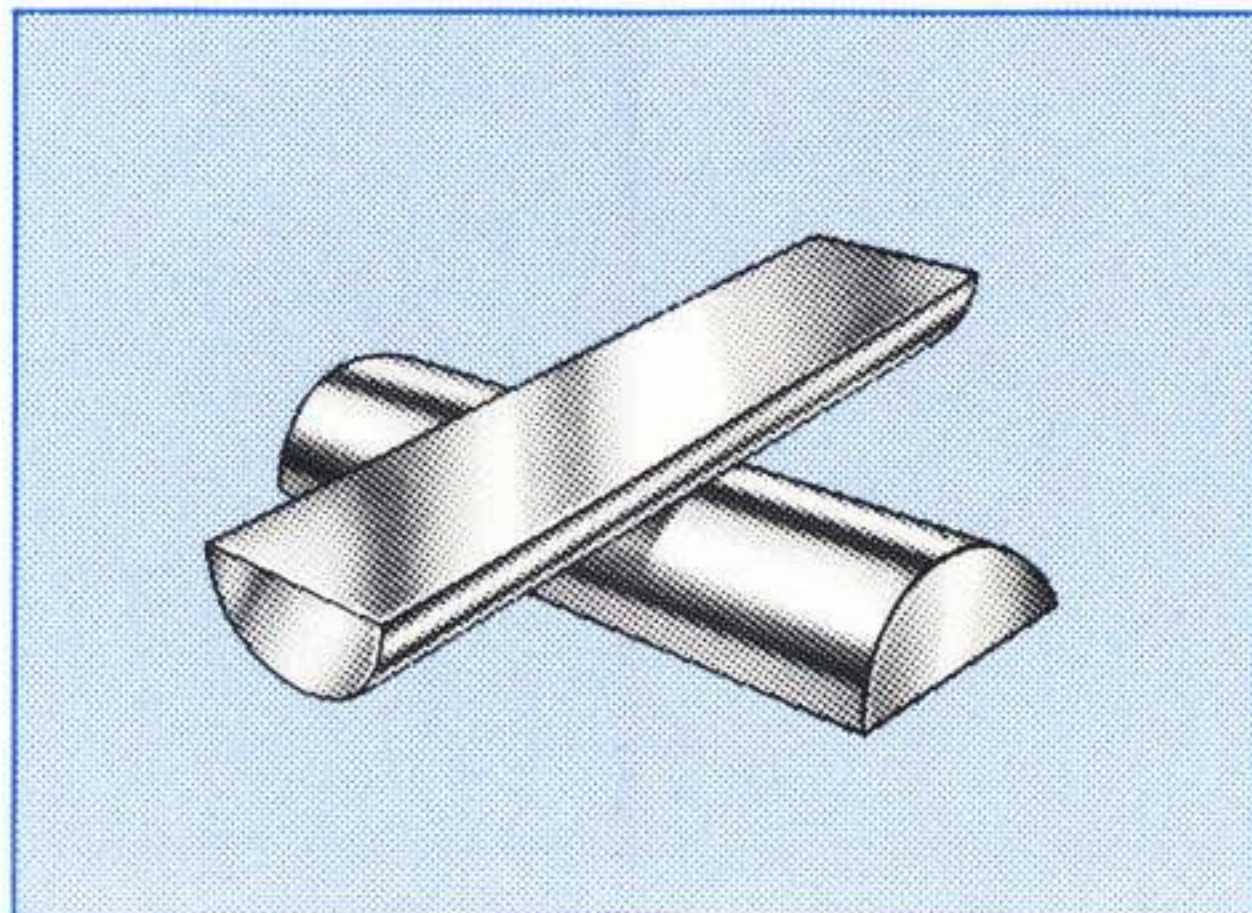


LONG LIFE. ULTRA MINIATURE SWITCH



- In spite of its small size (7×13×6, 0.8g), this switch assures 300,000 operations (min.) Mechanical and 50,000 operations (min.) Electrical Life at 5A 250V.
- W/E Alloy Cross-bar contact for low energy circuit is also available and proud of its high contact reliability for dry circuit.
- Offered with a choice of Solder, Printed Circuit terminals for your various needs.

● Cross-bar Contact



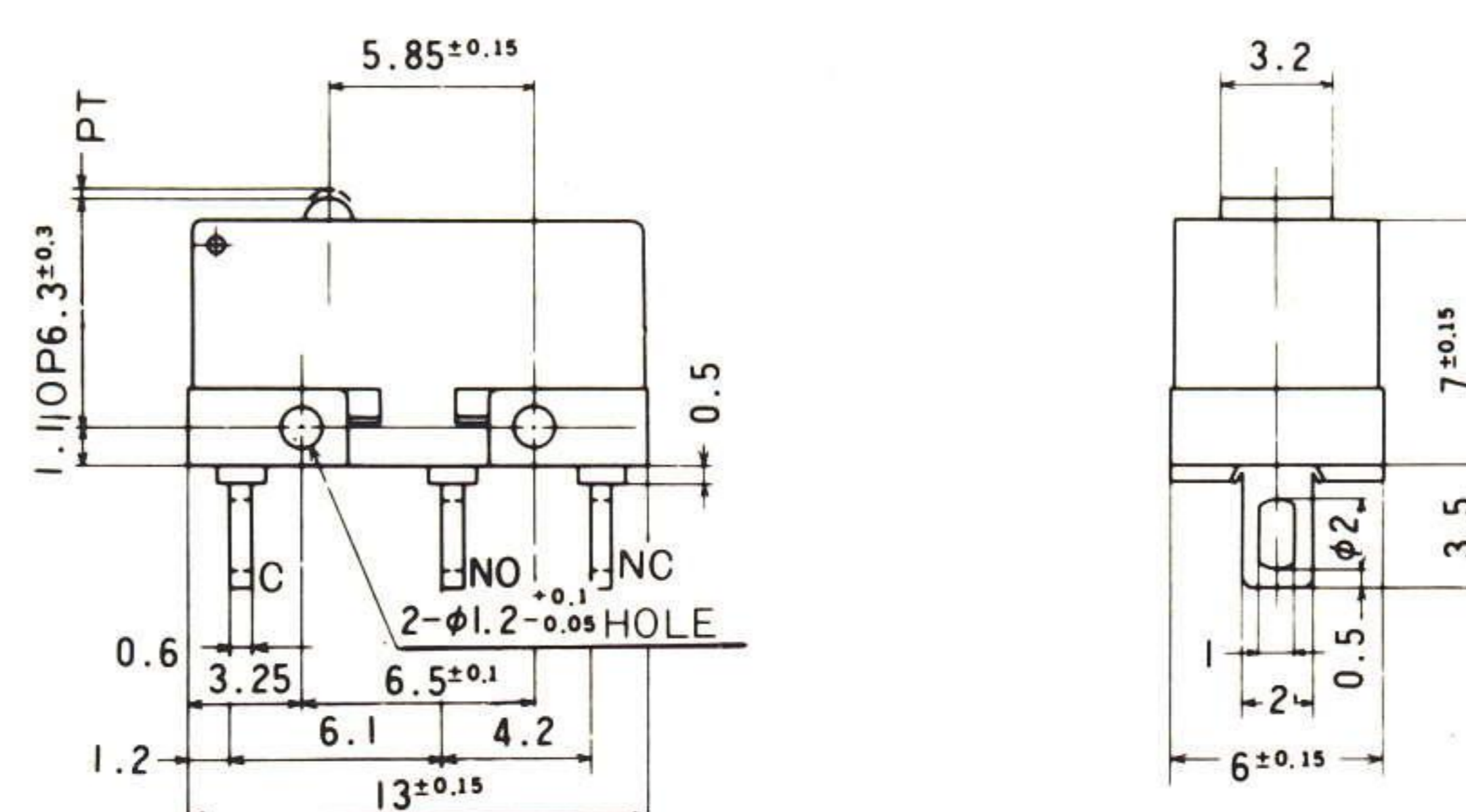
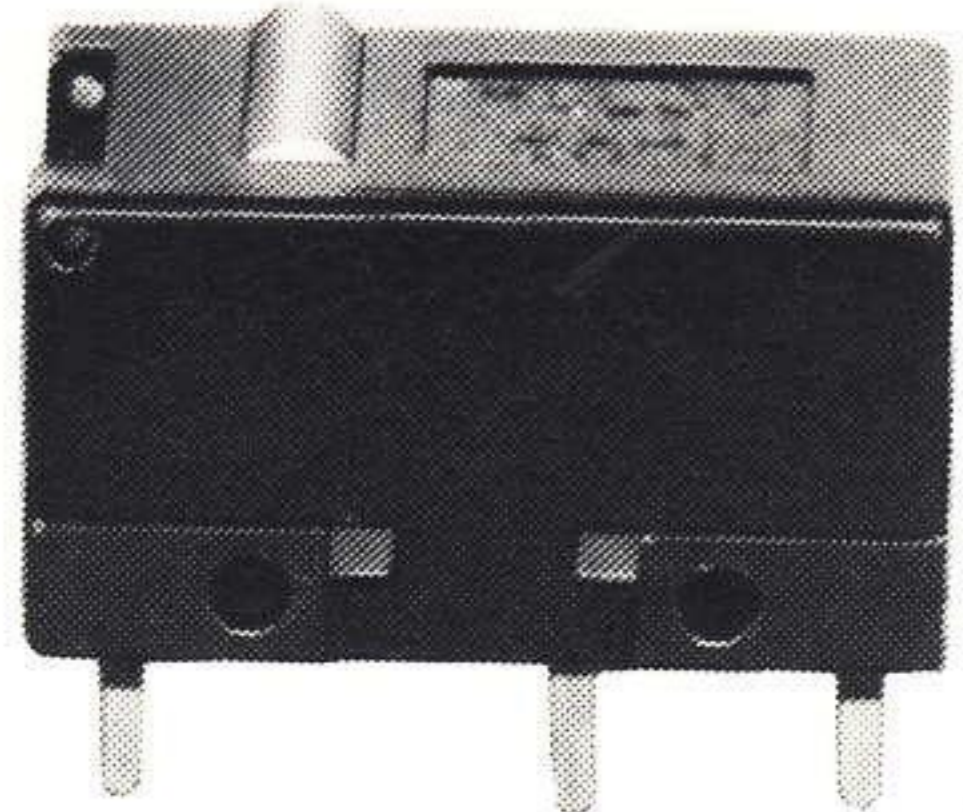
SPECIFICATION

Contact	Silver	Gold Plated Silver	W/E Alloy #1 Cross-bar
Electrical Rating	5A 125, 250VAC (Res. Load)		0.1A 125VAC, 0.1A 30VDC (Res. Load)
Insulation Resistance	More than 100MΩ, at 500VDC Megger		
Dielectric Strength	1000V AC between live poles 1500V AC between live pole and earth (Both 50/60Hz in normal temperature & humidity in one minute)		600V AC between live poles 1500V AC between live pole and earth 1500VAC RMS
Contact Resistance	Less than 30mΩ (at initial), at 1A 6VDC	Less than 50mΩ (at initial), Milliohmmer	Less than 50mΩ (at initial), at 0.1A 6VDC
*Withstand Shock	30G (min.)		
*Withstand Vibration	1.5mm double amplitude, frequency 10-55Hz in 2 hours		
*Operating Speed	0.5mm/sec. ~1m/sec.		
Operating Frequency	200 times per min.		
Mechanical Life	300,000 operations (min.)		
Electrical Life	50,000 operations (min., at rated load)		100,000 operations (min. at rated load)
Ambient Temperature	-15°C ~ 70°C		
Ambient Humidity	Under 80% RH		

* Shows specifications for Pin Plunger type. Note: W/E Alloy #1 Cross-bar Contact is not approved by UL or CSA

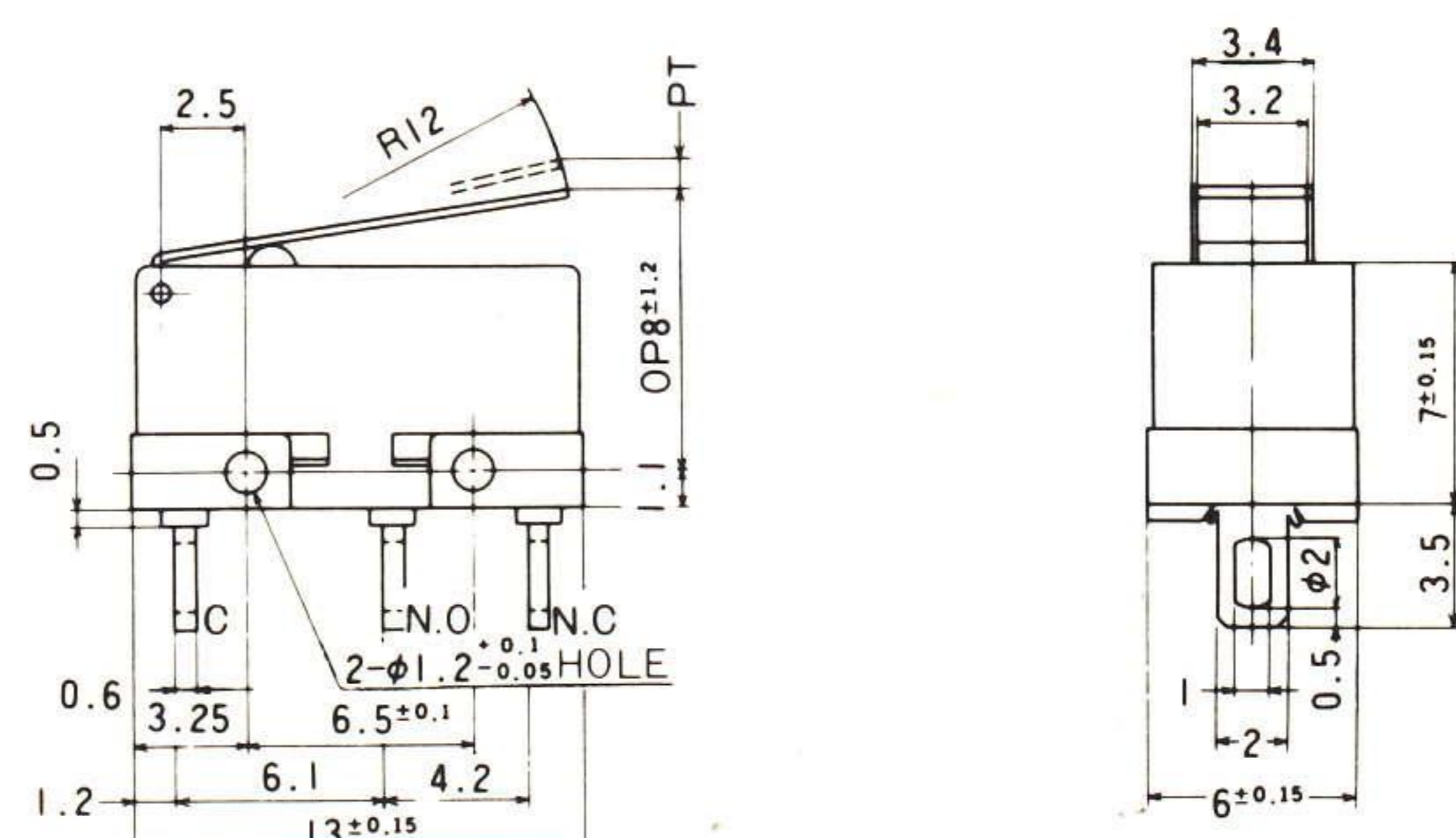
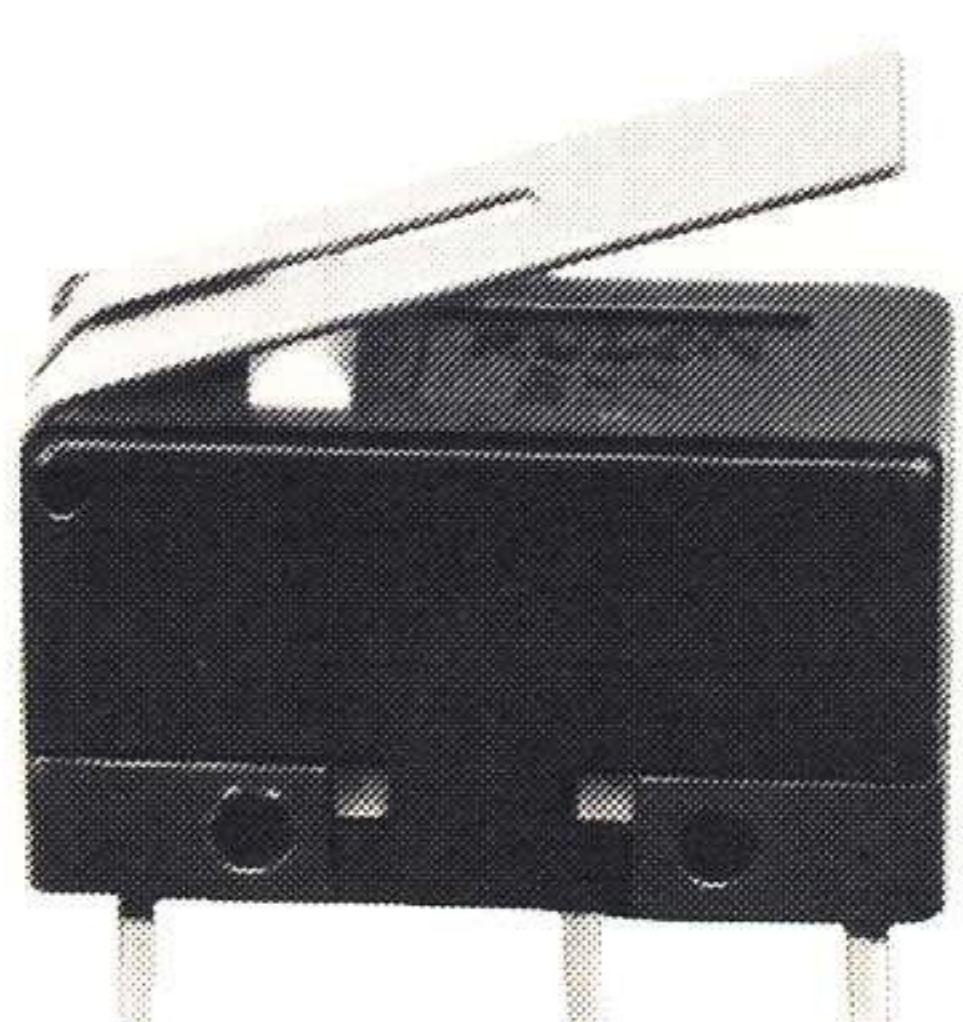
DIMENSIONS

- SH-1 (Pin plunger)



Type	Operating characteristics				
	OF(g) Max.	RF(g) Min.	PT(mm) Max.	OT(mm) Min.	MD(mm) Max.
SH-1	200	30	0.6	0.2	0.2

- SH-1L (Standard hinged lever)



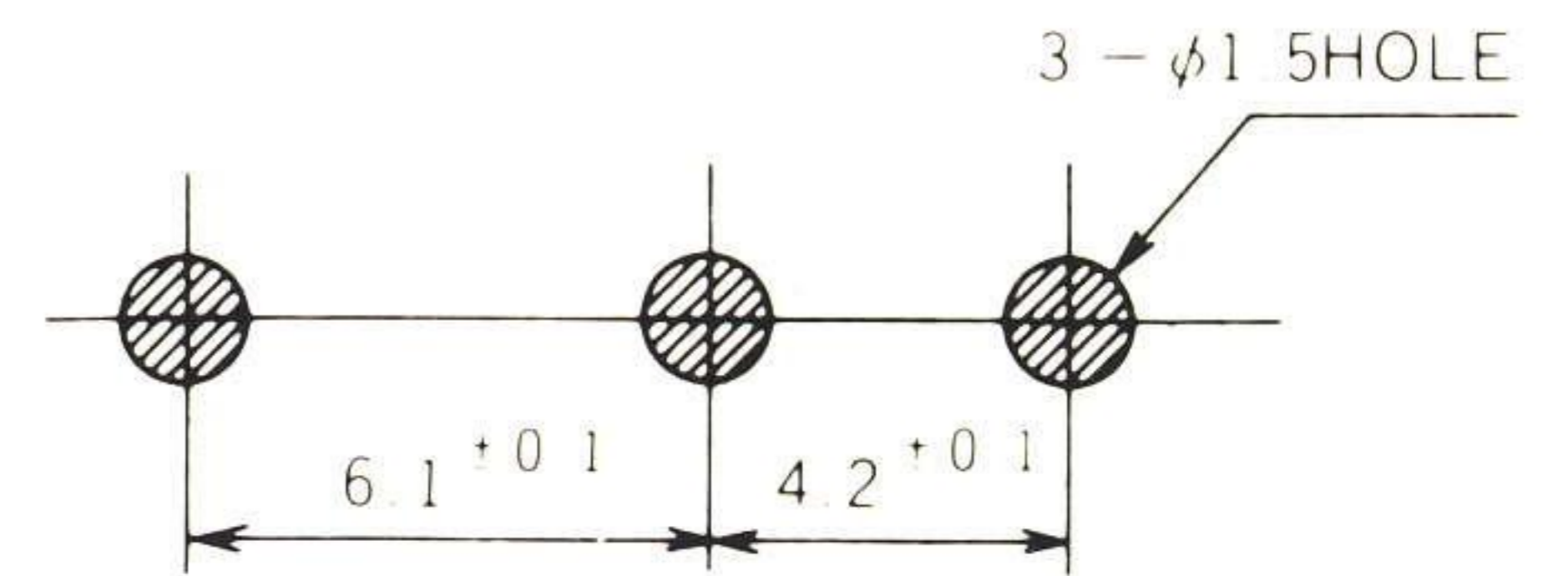
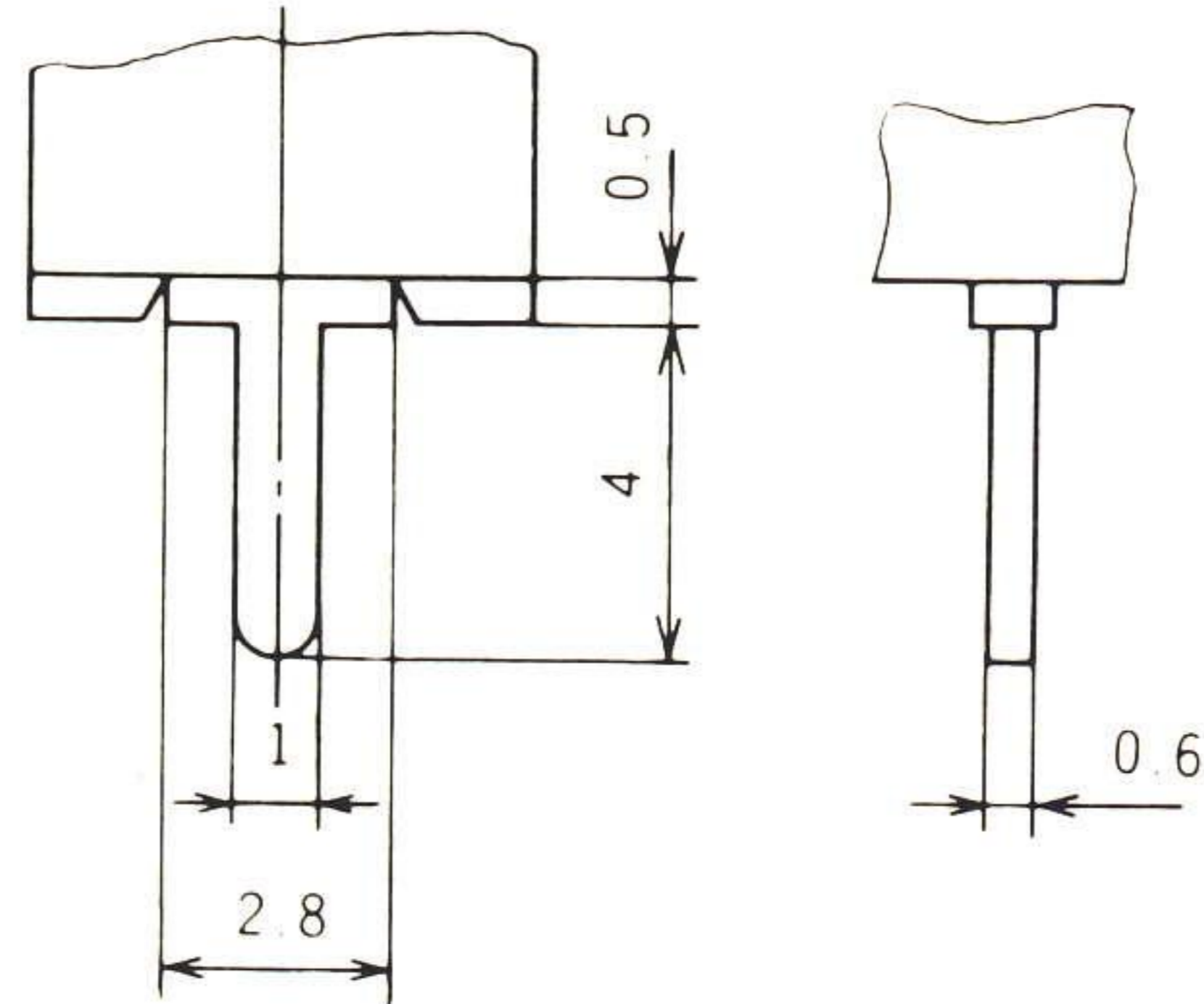
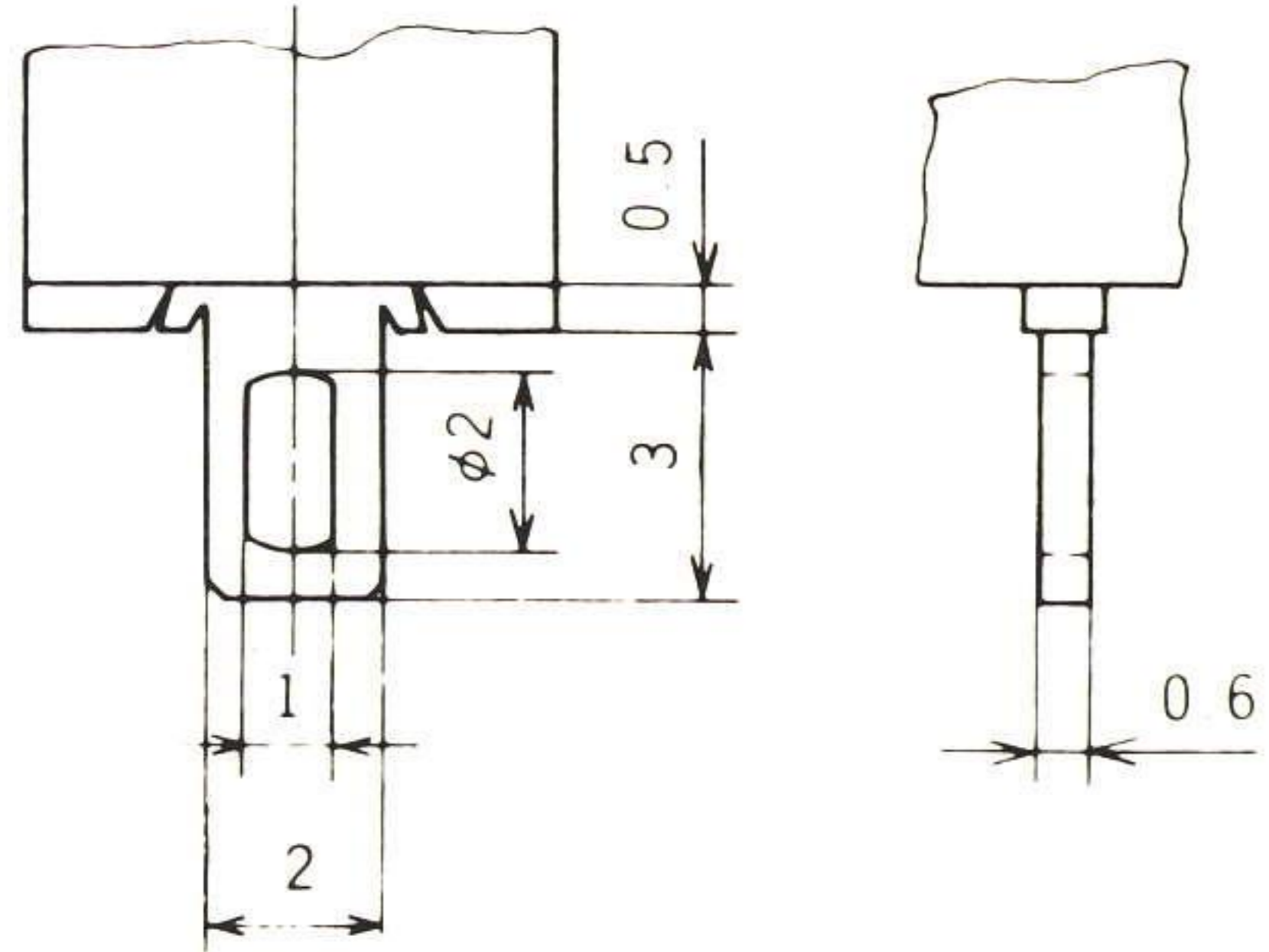
Type	Operating characteristics				
	OF(g) Max.	RF(g) Min.	PT(mm) Max.	OT(mm) Min.	MD(mm) Max.
SH-1L	60	7	3.2	1	1

TERMINALS/DIMENSIONS

● Solder terminal : No mark

● Printed Circuit terminal :
Mark C

PCB Layout



ORDERING CODE

SH-1□□□

■ Terminals

None	Solder
C	P. C. B.

■ Contact Materials

None	Silver
K	Gold plated silver
※ E	W/E alloy #1 cross-bar

■ Actuator

None	Pin plunger
L	Standard hinged lever

※ Minimum order : 500 pcs.

HANDLING HINTS

1. When soldering iron of max. 40W for a maximum of 5 seconds on any terminals, be careful to ensure that the iron does not touch the switch body.
2. When fixing, use M1.2 screw and fix firmly.
3. When mounting on metal body, it is recommended to use insulation cloth between switch and panel.